



# Girlguiding North Yorkshire North East County



## International Virtual Escapades - Rainbows





## Welcome to Girlguiding North Yorkshire North East's International Virtual Escapades badge, Rainbow edition.

Due to the covid pandemic in 2020/2021, all Girlguiding international travel and international opportunities came to an abrupt stop. We now need to start again and build up enthusiasm for international travel and opportunities within Girlguiding North Yorkshire North East.

In order to do this, we want to raise awareness of international Guiding and opportunities for all our members from Rainbows upwards and what better way to do this than have a special badge!

To really spark interest in international opportunities, we suggest you try and find a member who has been abroad with Girlguiding to come and talk to your unit about the amazing time they had. Hearing experiences first hand is often the best way and wouldn't it be amazing if a current Rainbow joins an international opportunity in about 10 years time after she was inspired by someone coming to talk to her unit!

International Virtual Escapades is a badge for all sections with the idea that girls can complete the badge in each section they are in. We have linked the badge to the programme as much as possible to make it easy for units to complete.

We appreciate units have a limited amount of time but if your unit is looking for a residential idea, why not use this badge and run a virtual international event for your unit from some venue in the UK? We challenge you to be as adventurous and realistic as you can be from the comfort of your unit meeting place/holiday venue. There are all sorts of virtual city tours/tours of buildings etc on the internet to help give the girls a realistic virtual international trip!

### How to complete the badge

Your Rainbow unit is challenged to plan a trip to somewhere in the United Kingdom.

To complete the challenge, as a minimum you have to complete the two compulsory challenges, two other gold challenges and then any four other activities to fit in with your programme.

### How to buy the badge

Please use the badge order form at the back of the pack. There are round centre badges and a badge with your section name to buy.



## The Challenges



### Compulsory Challenge - Where Are You Going To Go?

Decide on where in the UK you would like to visit.

### Teddy Travels (Have Adventures SB - Explore Stage 1)

Make a passport for you or your teddy. What is a passport and why is it important?

### Compulsory Challenge - International Guiding

There are guiding groups all across the world, we all form part of The World Association of Girl Guides and Girls Scouts (WAGGGS) spanning across over 52 countries. Guides, Rangers and adult members can travel internationally and visit units in other countries. You can find out more about the different countries by checking out the WAGGGS website -

<https://www.waggs.org/en/>

### World Centre Postcards (Know Myself UMA - Guiding Traditions)

WAGGGS has five World Centres: Pax Lodge in London, Our Cabaña in Mexico, Our Chalet in Switzerland, Sangam in India and Kusafiri, a travelling Centre that moves around Africa. Find out about each world centre then decide which one you would like to visit and why.

### Guiding and Me (Know Myself UMA - Get Guiding)

Find out how you fit into the Guiding family in the UK and make a family to help you remember everyone.

### How Are You Going To Get There?

Decide how you would travel to the destination of your trip. Coach, train, aeroplane, boat or a combination of all!

### Exciting Explorers (Have Adventures SB - Explore Stage 1)

Find out about an exciting explorer and make something to help you remember them.

### Tent-tastic (Have Adventures SB - Camp Stage 1)

Shelter is really important and if you are on an overnight adventure you'd need some kind of shelter, this may be inside a building, boat, vehicle or tent. Think about three important things a shelter must have then build a tent to have those features.



### Run Your Virtual Trip during Your Meeting or At a Sleep Over

Make your trip as realistic as possible. You could make tickets, bring your bags - you could have a game with the luggage, has anyone forgotten anything essential, you may be able to watch some virtual visits to some of the famous sites in the city. Be as adventurous as you can and have lots of fun on your virtual trip.





## What Are You Going To Do?

Make a plan of what you want to see and do on your trip.

## Signs from the Sun (Have Adventures SB - Explore Stage 1)

Sundials were used to tell the time before clocks were invented, they use the sunlight and stick to understand the time from the size of the shadow it makes.

## Landmarks (Have Adventures SB - Explore Stage 1)

Landmarks are things that stand out in an area, which could be a school, a certain looking house or even a tree. Landmarks are useful because they help us identify where we are, but famous landmarks like the Tower of London, the London Eye, Roseberry Topping, the White Horse and Whitby Abbey are also popular places to visit. Think of five landmarks you'd like to see on your trip.

## Secrets of Survival (Have Adventures UMA - Survival Skills)

There are four really important things you need to survive if you are lost in the wild: shelter, warmth, water and food. What could you do for each if you were lost and is there anything else you can do?



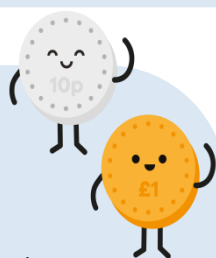
## Cost of the Trip

How much will your trip cost?

Groups often fundraise when planning an international trip. Talk about ways you could raise money. Why not try out one of your ideas and hold a fundraising evening and donate the proceeds to the World Thinking Day Fund or a local charity of your unit's choice.

## Higher or Lower (Skills for My Future UMA - Money)

Can you guess which one is more expensive? A tent or a passport, an ice cream or the ticket to the zoo. can you get them right?



## What Food Will You Eat?

You will need to eat some food on your trip, have a think about some snacks you can eat on your trip.

## Kitchen-less Cooking (Have Adventures SB - Camp Stage 1)

Have a go at some kitchen-less cooking using a barbeque or tea light candle and plenty of adult help. It could be baked beans or popcorn on the tea light or fruit stuffed with and chocolate or vegetable/fruit kebabs.

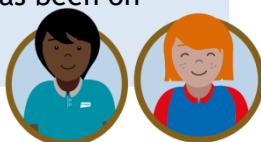
## Pizza Party (Take Action UMA - Better Together)

Make your dream pizza will it be sweet or savoury?



## Arrange a Visitor

Find a Girlguiding member to come and talk to your unit about an international trip she has been on with Girlguiding.





### What about Luggage?

When you have decided where you are going and how to get there you need to think about what to bring.

### Packing Problem (Have Adventures SB - Camp Stage 1)

What do you need to take on an adventure? Make a list of or draw the items you think you need to take with you. Once you have your list decide on the 8 most important and then the 4 most important.

### Rain or Shine (Have Adventures SB - Camp Stage 1)

What are the right clothes for the weather of your adventure? Cut out the clothes pictures and dress the Rainbow template at the back of the pack for the weather. Choose from: windy, foggy, cloudy, raining, snowing, sunny, cold or hot weather.

### What Should You Do To Keep Warm and To Cool Down? (Keep Warm - Have Adventures SB - Explore Stage 1 and Hot and Cold Have Adventures UMA - Survival skills)

Depending on where you go and the time of year it might be cold and snowy or sunny and warm. Think about and try some methods to keep warm and how to cool down in the heat.

### Shoe Show (Express Myself UMA - 3D Craft and Design)

It is really important you wear the right shoes for your trip, explore different types of shoes then design your own!



### Global Action

Think global - act local. Global travel is exciting and full of adventure but as with everything we do, there is an environmental impact. Can you think of something to do locally to off-set the carbon emissions given when undertaking international travel?

### Caring Campers (Have Adventures SB - Camp Stage 1)

Looking after the local area and wildlife whilst you visit somewhere is really important. Can you spot the differences between the two campsites at the back of the pack, which one is nicer to the environment?

### Waste of Time (Take Action UMA - Save the Planet)

How much plastic do you use each day or on a trip? Can you reduce, reuse or recycle it?

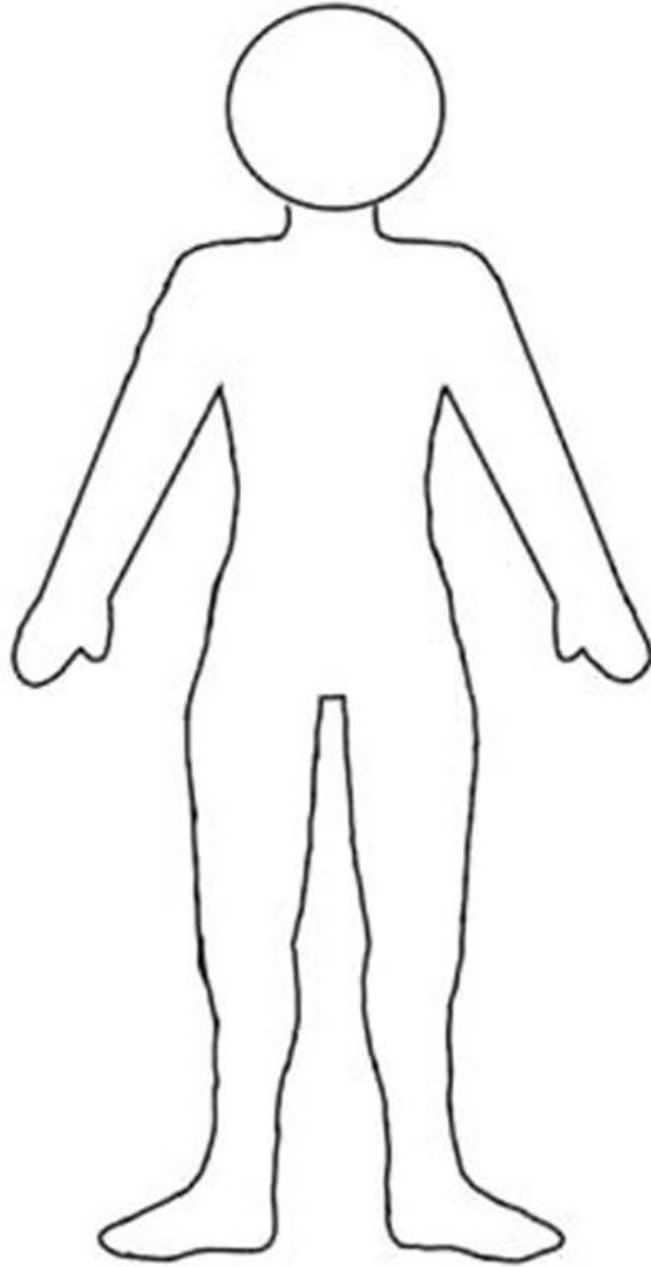
### Action for Energy (Take Action UMA - Save the Planet)

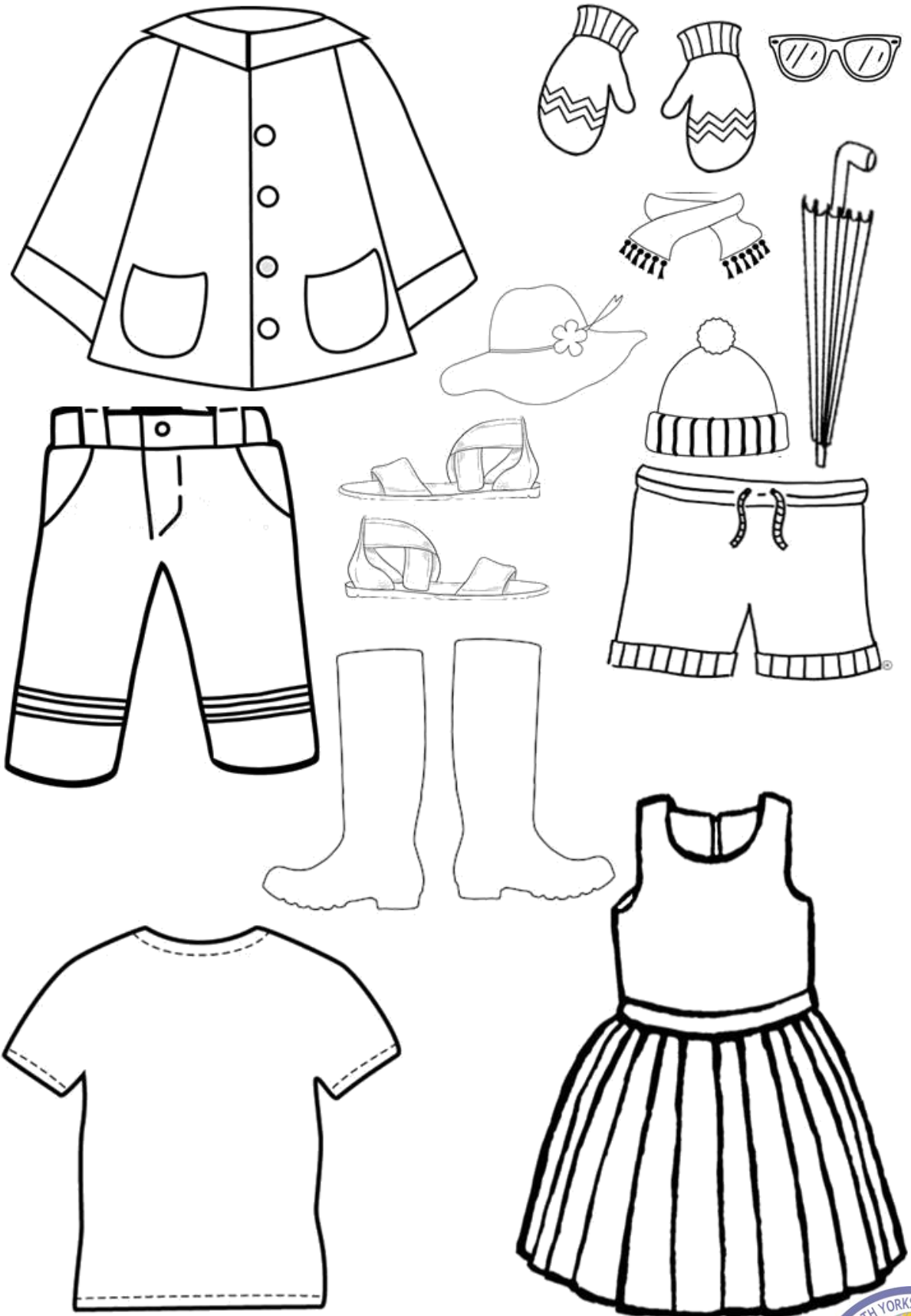
Find out about renewable and non-renewable energy.















## Badge Order Form

Leaders Name:	
Unit Name:	
District/Division:	
Total Number Of Circular Badges At £1.00 Each:	
Total Number Of Section Name Badges At £1.00 Each:	Rainbows: Brownies: Guides: Rangers:
Total Cost Of Badges:	
Delivery Cost (please tick the correct number of badges, circular and section name added together)	<input type="checkbox"/> 1-25 badges - £1.00 <input type="checkbox"/> 26- 50 badges - £1.25 <input type="checkbox"/> 51 - 100 badges - £1.50
Total Cost of Badges and Postage:	
I paying the above amount (please tick the correct box): <input type="checkbox"/> Via bank transfer to Guide Association NYNE Sort code: 20-56-74 Account number: 20390712 Reference: International VE. Please email a copy of the order form to <a href="mailto:admin@girlguidingnyne.org.uk">admin@girlguidingnyne.org.uk</a> before transferring the money. <input type="checkbox"/> Via a cheque payable to Girlguiding NYNE. Please send the order form and cheque to: Ali Hampshire, Girlguiding NYNE Administrator, Nun Bank, Oswaldkirk, York, YO62 5XT	
Contact Email Address:	
Delivery Address:	
Leader Signature:	

